

# ANNUAL REPORT





# NORTH CLACKAMAS WATERSHEDS COUNCIL



Sediment sampling in the Kellogg impoundment **2023/2024**



The Kellogg Team on site with Senator Ron Wyden, Milwaukie Mayor Lisa Batey, Council President Robert Massey, and Metro Councilor Christine Lewis.

## Kellogg Creek Restoration & Community Enhancement Project Advances

The project to remove Kellogg Dam and restore Kellogg Creek is moving forward with design! In summer, sediment sampling barges were lowered into the Kellogg impoundment with cranes. The sediment cores they have collected will give us the final piece of information we need for the final design process.

The design has been funded by the largest grant in NOAA Fisheries history, through the Infrastructure Investment & Jobs Act. Many thanks to Senators Jeff Merkley and Ron Wyden for helping make this project a reality.

The project is a partnership between the Watersheds Council, American Rivers, the City of Milwaukie, and the Oregon Department of Transportation, three Tribes, and 23 other partners working to restore a free-flowing creek in downtown Milwaukie.

### In 2024-25, here's what will happen at Kellogg Dam:

- Sediment sampling will wrap up
- The final design phase will launch
- Community engagement around the design of the project will take off, with tours, meetings, and more
- Community science (see page X) will continue collecting vital data

You can track the project [here](#).





# NORTH CLACKAMAS WATERSHEDS COUNCIL

## Restoring the Willamette River

Projects are underway to improve habitat in the Willamette River! We designed a project to increase salmon, steelhead, and lamprey habitat at the confluence of the Willamette and [River Forest Creek](#), in partnership with two landowners. While we write these words, we’re constructing rock weirs and logjams to provide a better environment for smolts to feed and rear before heading out to the ocean.

At the same time, we’re designing a project to create better habitat at [Elk Rock Island](#), one of the rare side-channel habitats on the lower Willamette, a site loved by the people of our watersheds for access to nature. Look for this project to be constructed in 2026.

These projects are part of a larger strategy to restore the Lower Willamette River between Gladstone and Milwaukie Bay. This is a vital stretch of river for every fish in the entire Willamette system, as well as the people who love Oregon’s main river.

2023/2024



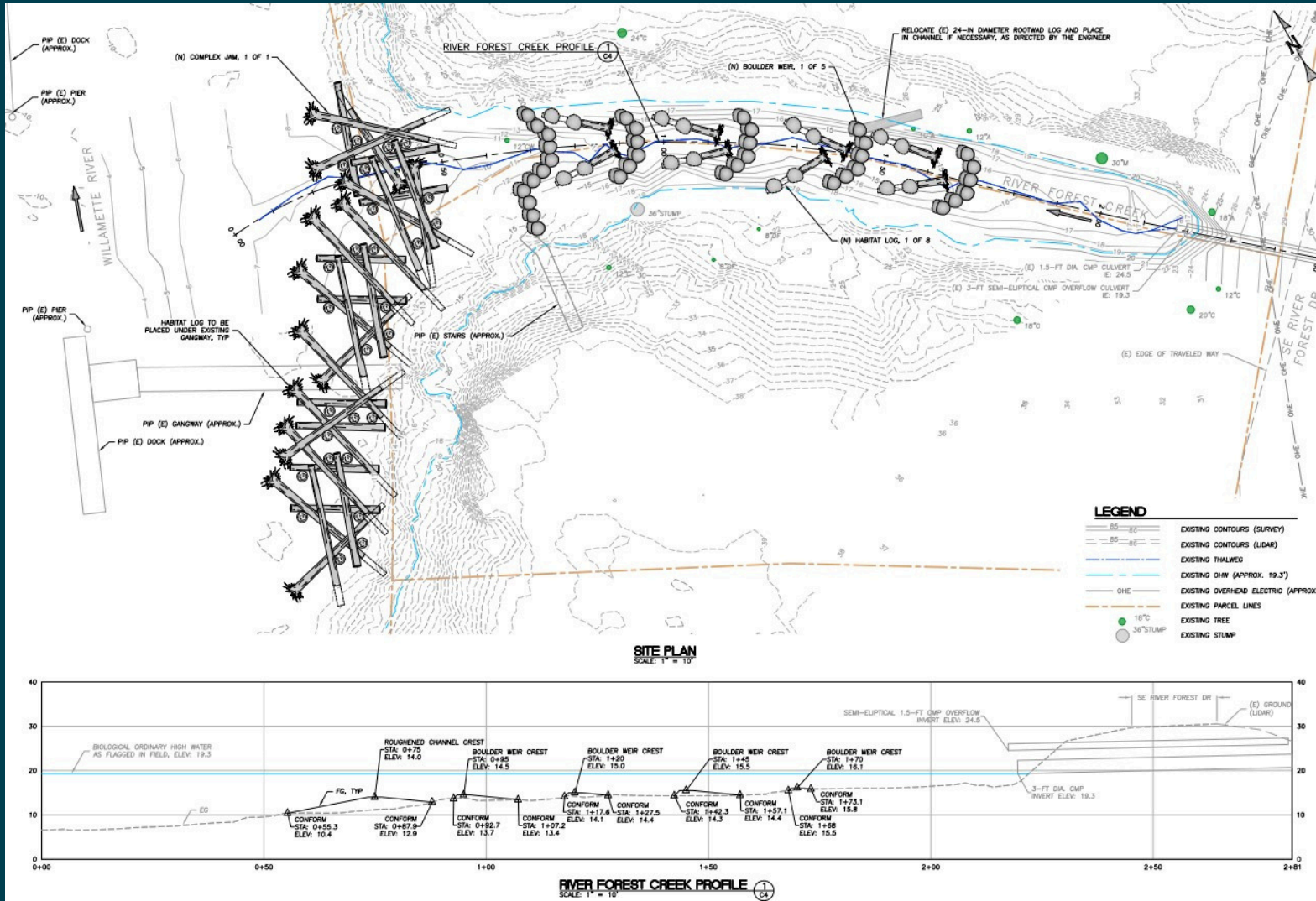
Thumbs up for bringing projects to construction!



Enhancing the back channel at Elk Rock Island



Building fish habitat



Willamette - River Forest Confluence Design



# NORTH CLACKAMAS WATERSHEDS COUNCIL

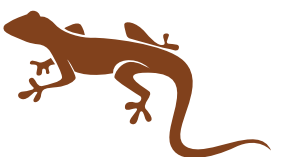


## Community Science Takes Off

If you've been around Milwaukie, you've probably seen kids from Milwaukie High School and Rowe Middle School walking around in chest waders with big nets. They're part of the [Kellogg Creek Student Macroinvertebrate Monitoring Program](#), where students collect biological indicator data at spots along Kellogg Creek using nonlethal and accurate student survey methods developed by Portland State University. This is a partnership between the Watershed Council, the schools, Confluence Environmental Center, CASM Environmental, Portland State University, and funded by American Rivers, Gray Family Foundation, and NOAA Fisheries.

In Spring, we held the Kellogg BioBlitz, where community volunteers collected ecological data to track changes over time as restoration takes place, as well as changes from climate shifts and ever-changing environmental conditions. The BioBlitz will be repeated every year, and is funded by American Rivers and NOAA Fisheries, with sponsorship support from Bob's Red Mill.

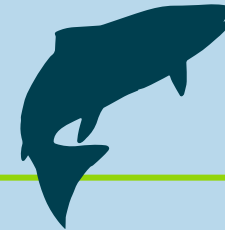
Photos: Kellogg BioBlitz, Freshwater Mussel monitoring, Water Quality tour, Kellogg Creek Student Macroinvertebrate Monitoring Program



2023/2024



# WHAT TO LOOK FOR IN 2024-25



## Kellogg Creek Restoration & Community Enhancement Project

- Final sediment sampling
- Community engagement
- Final design phase
- Fundraising for construction



## Watershed Restoration

- Completing the Willamette River – Forest Project construction (Fall 2024)
- Designing the Elk Rock Island Side Channel Project, preparing for construction
- Expanding streamside restoration along Parmenter Ponds, Rinearson Creek, and Kellogg Creek
- Engaging the Community at Three Creeks Natural Area
- Working with landowners to establish shade and control invasive plants

## Watershed Science

- Kellogg Creek Student Macroinvertebrate Monitoring Project
- Ongoing stream temperature monitoring and using a thermal drone to identify springs and cold water sources
- Ongoing eDNA monitoring of fish populations
- Launching freshwater mussel monitoring

## Strengthening the Watershed Council

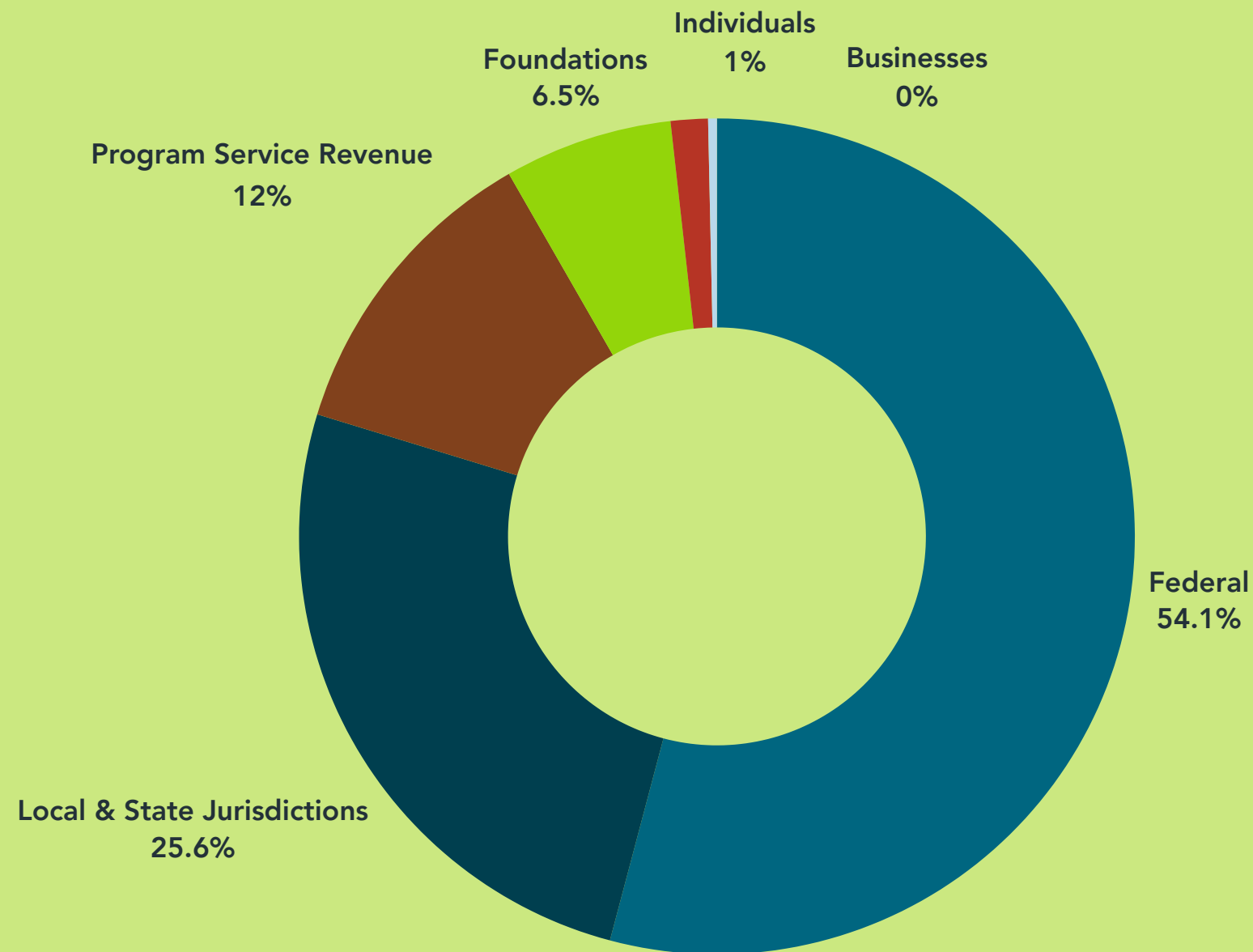
- Completing our Strategic Plan to guide us for the next 5 years
- Raising funds to sustain our work
- Upscale our fiscal systems to keep pace with our growth





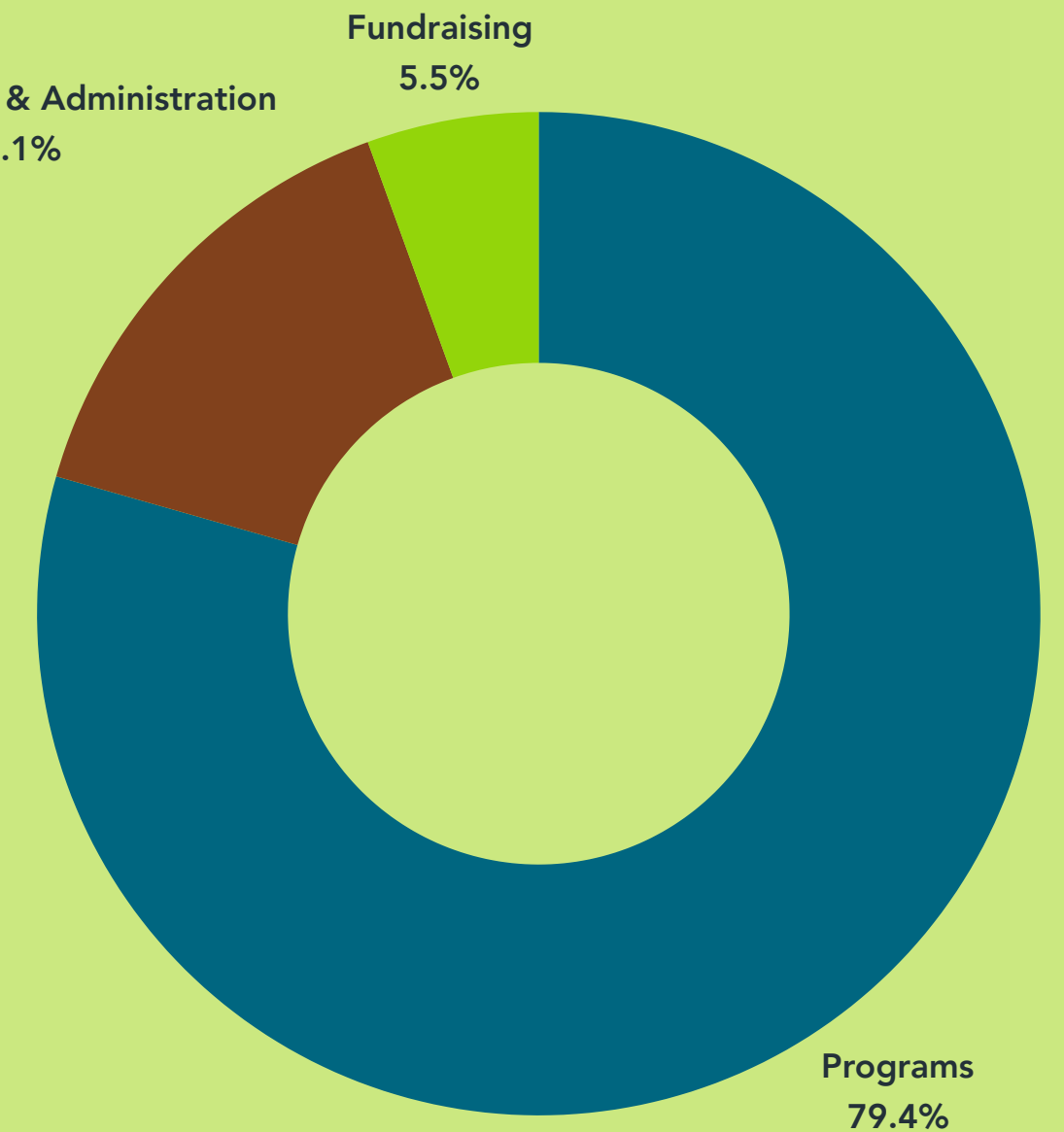
## REVENUES

Federal	\$503,732.53	54%
Local and State Jurisdictions	\$238,221.67	26%
Program Service Revenue	\$111,603.65	12%
Foundations	\$60,658.00	7%
Individuals	\$13,364.30	1%
Businesses	\$3,154.40	0%
<b>Total</b>	<b>\$930,734.55</b>	



## EXPENSES

Programs	\$755,351.00	79%
Mananagement & Administration	\$143,170.00	15%
Fundraising	\$52,637.00	6%
<b>Total</b>	<b>\$951,158.00</b>	







# CONTRIBUTORS

2023/2024



## PARTNERS

American Rivers  
Bird Alliance of Oregon  
Cascadia Wild  
City of Gladstone  
City of Happy Valley  
Clackamas County  
Clackamas Partnership  
Clackamas River Basin Council  
Columbia Land Trust  
Confederated Tribes of the Grand Ronde  
Confederated Tribes of the Umatilla Indian  
Reservation  
Confederated Tribes of the Warm Springs  
Indian Reservation of Oregon  
Confluence Consulting  
Confluence Environmental Center  
DePave  
Educate Ya!  
Friends of Spring Park & Elk Rock Island  
Friends of Trees  
Greater Oregon City Watershed Council  
Island Station Neighborhood Association  
Jennings Lodge Community Planning  
Organization

John Inskeep Environmental Learning Center at  
Clackamas Community College  
Johnson Creek Watershed Council  
Milwaukie High School  
Milwaukie Presbyterian Church  
Native Fish Society  
Natural Resources Office of Governor Tina Kotek  
North Clackamas Parks & Recreation Department  
North Clackamas School District  
Oak Grove Community Council  
Oregon Department of Environmental Quality  
Oregon Department of Fish & Wildlife  
Oregon Dept. of Transportation  
Port of Portland  
Portland State University  
Rowe Middle School  
State Representative Mark Gamba  
Unite Oregon  
US Army Corps of Engineers  
US Senator Ron Wyden  
US Senator Jeff Merkley  
US Congresswoman Lori Chavez-Deremer  
The Wetlands Conservancy  
Xerces Society for Invertebrate Conservation

## PUBLIC AGENCY SUPPORT

City of Milwaukie  
Clackamas Soil & Water Conservation District  
Clackamas Water & Environment Services  
Metro  
NOAA Fisheries  
Oak Lodge Water Services  
Oregon Department of State Lands  
Oregon Conservation & Recreation Fund  
Oregon Watershed Enhancement Board  
US Fish & Wildlife Service

## BUSINESSES

Bob's Red Mill  
Leatherman Tool Group  
Starbuck's Coffee  
TechSoup

## FOUNDATIONS

Bonneville Environmental Foundation  
Gray Family Foundation  
Johnny Leuthold Charitable Trust  
Meyer Memorial Trust  
Milwaukie Parks Foundation  
PGE Salmon Habitat Support Fund  
The Open Rivers Fund, a program of the Resources Legacy Fund  
supported by the William and Flora Hewlett Foundation  
Spirit Mountain Community Fund  
William & Irene Finley Charitable Fund



# STAFF



**Neil Schulman**  
Executive Director



**Amy Van Riessen**  
Watershed Restoration  
Manager



**Kira Smith**  
Engagement & Outreach  
Coordinator



**Peyton Priestman**  
Confluence Environmental Center  
AmeriCorps Member



Staff in the field

# BOARD OF DIRECTORS

**Mona Thomason**, Chair  
**Lara Christensen**, Vice-Chair, Oak Lodge Water Services  
**Laura Rost**, Treasurer, Finance Committee Chair  
**Dale Guenther**, Secretary

**Steve Berliner**, Fundraising & Events Committee Chair  
**Bob Bohannon**  
**Joseph Edge**, Issues & Opportunities Committee Chair  
**Mark Fitzsimons**

**Steve Ham**  
**Robert Livingston**, Clackamas Water Environment Services  
**Robert Massey**, City of Milwaukie  
**Erin Reome**, North Clackamas Parks & Recreation District  
**Dick Shook**







# NORTH CLACKAMAS **WATERSHEDS** **COUNCIL**

2416 SE Lake Rd.  
Milwaukie OR 97222  
neil@ncwatersheds.org  
503-550-9282  
northclackamaswatersheds.org

## **2023-2024 Annual Report**

Content: Executive Director Neil Schulman

Layout & Design: Lori L. O'Neil

All Photos: Watersheds Council Staff

